

# The College Admissions Process Sachem High School

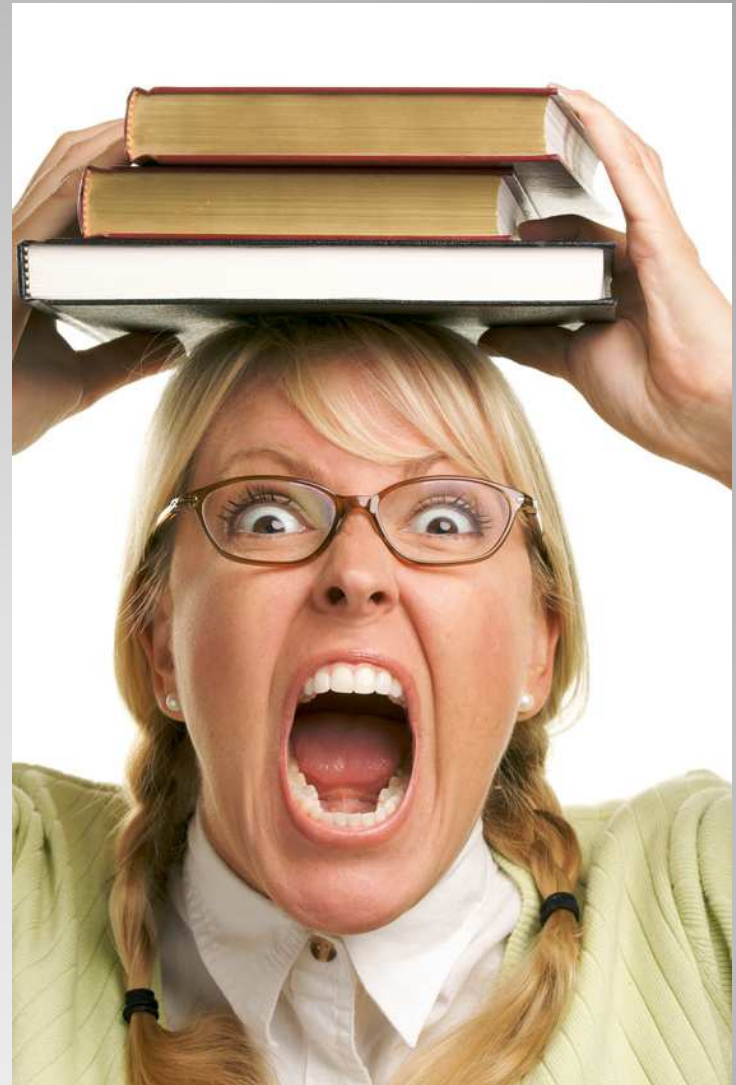


**Grade 12 Parent Meeting  
October 18, 2011**

Presented by:  
Francine Cufalo & Beth Farber  
Guidance Counselors

Don't know where to begin? Wondering how your family is ever going to make it through the application process?

Don't worry... We're here to help.





# Agenda

- What students should be doing...
- Components of the application
- Types of admission
- Timeline for the application process
- Sachem High School procedures
- Naviance – Family Connection
- Financial Aid Process

## What Students Should Be Doing...

- List of Colleges (Reach/Target/Safety)
- Submit Recommendation Questionnaires to Counselor/Teachers
- Visit Colleges/Interviews
- Completing Applications
- Completing Testing Requirements
- NCAA Eligibility (if an athlete)
- Making Decisions

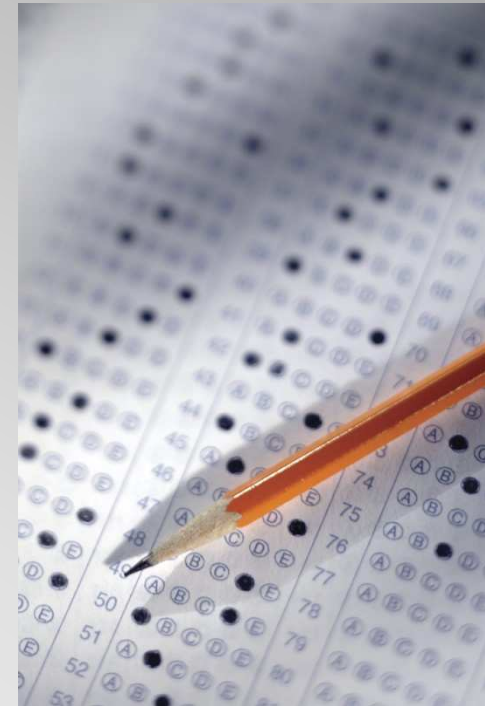


# Components of the Application

- Main Application
  - Common Application ([www.commonapp.org](http://www.commonapp.org))
  - SUNY Application ([www.suny.edu/student](http://www.suny.edu/student))
- Transcript
- Testing (SAT, Subject Tests, ACT)
- Essay/Personal Statement
- Activity Sheet/Resume
- Counselor Letter of Recommendation
- Teacher Letters of Recommendation

# Completing Testing Requirements

- SAT Reasoning Test
  - October, November, December
  - [www.collegeboard.com](http://www.collegeboard.com)
- ACT
  - October and December
  - [www.actstudent.org](http://www.actstudent.org)
- SAT Subject Tests
  - Same dates as SAT Reasoning Test



# Types of Admission

- Early Decision (Binding)
  - May only apply ED to one school
  - If accepted, commitment to attend
- Early Action (Non-Binding)
  - Apply by early deadline, notified earlier
- Regular Decision
  - Deadline Admission – Formal deadline after which applications are no longer accepted.
  - Rolling Admission – Applications accepted on ongoing basis until class has been filled.

By April 1<sup>st</sup> – Colleges notify student of admission decision

By May 1<sup>st</sup> – Student notifies college of intention to attend/places deposit

# Sachem High School Procedures

## **Student Submits Directly to College:**

- Completed application
- Application fee
- Essay
- Activity Sheet/Resume

## **Student Requests High School to Send:**

- Transcript
- Letters of Recommendation
- Test Scores\*

\* Note: Some colleges may require test scores be submitted directly from the testing agency.

# Financial Aid Process

- Timeline
- Forms
  - FAFSA
  - CSS Profile
  - Institutional Form
- Determination of Family Need
- Financial Aid Package



# Financial Aid Forms

## FAFSA (Free Application for Federal Student Aid)

- Required by all institutions for financial aid
- Submit after January 1, 2012

## CSS Profile

- Required by some institutions
- Requests additional information to determine need.
- Submit Fall 2011
- \$25 for initial registration and submission to one college.  
\$16 per additional college or university

# Types of Financial Aid

- Scholarships (Gifts)
  - Academic
  - Athletic
  - Talent
  - Merit-based
  - Private, College, etc.
- Grants (Gifts)
  - Federal (PELL)
  - State (TAP)
  - College
- Loans (Borrow)
  - Student
  - Parent
- Work Study
  - On-campus job

**Mark your calendars...**



**Financial Aid Information Meeting for  
Parents of Grade 12 Students**

**November 17, 2011**

**7 p.m.**

**Sachem North Auditorium**

## **Where to Get More Information**

- See your child's guidance counselor
- Read application materials
- Visit campuses
- Research on the Internet
- Speak with college admissions officers

## Helpful Web Sites

[www.collegeboard.com](http://www.collegeboard.com) (SAT and Profile)

[www.actstudent.org](http://www.actstudent.org) (ACT)

[www.finaid.org](http://www.finaid.org)

[www.fastweb.com](http://www.fastweb.com)

[www.eligibilitycenter.net](http://www.eligibilitycenter.net) (NCAA)

[www.fafsa.ed.gov](http://www.fafsa.ed.gov) (FAFSA)

[www.connection.naviance.com/sachemnorth](http://www.connection.naviance.com/sachemnorth)

[www.connection.naviance.com/sachemeast](http://www.connection.naviance.com/sachemeast)



We hope you found our presentation helpful and informative. For further information, please contact your child's Guidance Counselor.

Good luck!