

Sachem High School
North

JUNIOR

**COLLEGE
HANDBOOK**

2011

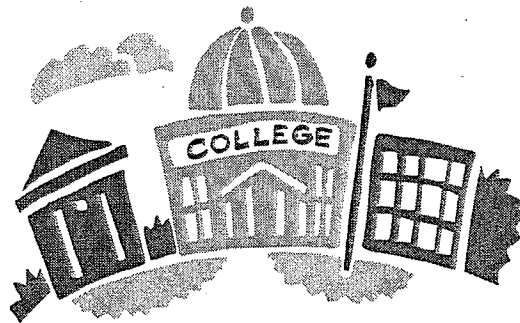


Table of Contents



Getting Started: College Searches & Test Prep

- Steps Toward College Selection..... 1
- NAVIANCE College Search Program..... 2
- SAT & ACT Reasons to Take & How to Register..... 3-6
- Which College is Right for Me?..... 7-8
- Information for Students with Disabilities..... 9

What to do in the Junior Year

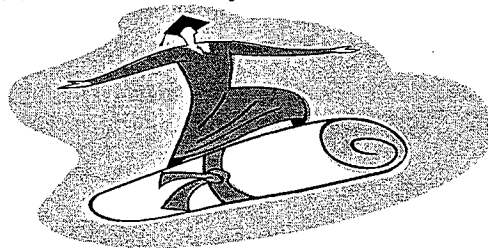
- Tours: Visiting College Campuses..... 10-12
- Your Student Resume:..... 13-14
- Get Ready for Senior Year!..... 15

NCAA Information for Student Athletes

- NCAA Clearinghouse: What Do I Need To Do?..... 16
- NCAA Freshman Eligibility Standards Quick Reference Sheet... 17-18
- NCAA Initial Eligibility for Students with Disabilities..... 19

Resources

- Glossary of Terms..... 20
- Web Site Addresses..... 21-22
- SUNY Map & Information Summary..... 23-24



Steps in the College Selection Process

Step 1: Research (Junior Year)	Step 2: Testing (Spring of Junior Year /Fall of Senior Year)	Step 3: Application (Fall of Senior Year)	Step 4: Financial Aid (Senior Year)	Step 5: Decision (Spring of Senior Year)
<ul style="list-style-type: none"> Meet with your counselor to complete an initial college search and obtain information to kick-start the process. Utilize online college searches, such as College board and Naviance to help develop your list of schools. www.collegeboard.com http://connection.naviance.com/sachemnorth Develop a balanced list of reach, target, and safety schools, considering both academics, as well as cost of the school. Attend college fairs, such as College Night @ Sachem East (fall). Visit college campuses. Potential Division I & II athletes, be sure to see your counselor about NCAA Clearinghouse requirements. Potential Military Academy applicants, discuss these plans with your counselor. Check the guidance web site for important information www.sachem.edu. 	<ul style="list-style-type: none"> Register for the SAT I Reasoning Test (check deadlines). Register for the ACT (check deadlines). Register for SAT II Subject Tests if needed. (Check web sites of the colleges you are interested in to see if required/which tests to take.) Avoid late registration fees by applying on time. Enroll in SAT/ACT prep courses available through Sachem. Register with Naviance see pg. 2 <p>Important web sites: www.collegeboard.com www.actstudent.org</p>	<ul style="list-style-type: none"> Carefully complete all college applications. Most applications are available to be completed online. Be aware of deadlines!! Print out a hardcopy of all online applications for your records. Ask teachers for letters of recommendation. Request your SAT/ACT scores to be sent to your colleges of choice by the appropriate testing agency. Request your transcripts & supporting materials to be sent by the Guidance Office. Request mid-year grades to be mailed to those colleges that require them. 	<ul style="list-style-type: none"> Check early to see if colleges require the CSS profile. Attend Sachem's Financial Aid Information Night for senior parents (in the fall). Complete the Free Application for Federal Student Aid (FAFSA) online (www.fafsa.ed.gov) or by mail in January of the senior year. Check the Guidance Department's Scholarship Newsletter for possible scholarship opportunities. 	<ul style="list-style-type: none"> Inform your counselor of your final decision. Submit copies of all college acceptance letters and scholarship awards to your counselor. Complete the Senior Survey with your counselor. Request your final transcript to be sent to the college you choose to attend.

COLLEGE SEARCHES & COMPARISONS



NAVIANCE

What is Naviance Family Connection?

Naviance is a web based service provided to all Sachem High School students. It assists students and parents with the post secondary high school planning process and is used by the guidance office for application submission.

Students and Parents can access from home:

- College Searches, Maps, Comparisons & Acceptance History
- A list of scheduled college visits to Sachem North
- College Acceptance Data- *compare your GPA, Standardized Test Scores and other statistics with actual students who applied to the same colleges.*
- Apply for College Admission, Scholarships and access information.
- View your personal record of standardized test scores, averages and prospective colleges

IMPORTANT: All students must register with Naviance in order to send transcripts and supporting materials to the colleges they are applying to.

How do I access this useful site?

Use your web browser to connect to

<http://connection.naviance.com/sachemnorth>

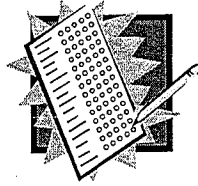
Enter your family or student personal registration code in the New User box and follow the directions to create an account.*

**Family and student registration codes can be provided below by your guidance counselor in the space below during the Junior Interview.*

Student Registration Code: _____

**Family personal registration codes are mailed out in January of the Junior year from the Guidance Office. Can't remember yours? See your counselor for assistance.*

GET READY FOR THE SAT/ACT EXAMS!!



Both tests have the same goal – to help colleges predict your chances of success during your freshman year of college. These tests, along with your high school grades, are quite accurate predictors of freshman success. Almost all four year colleges accept the SAT and ACT scores equally. Thus, students are encouraged to take both tests to maximize their chances of getting the highest score possible. In most cases, when college applicants submit scores from both tests, colleges will use the higher of the two scores for purposes of admissions, scholarships and athletic eligibility. So taking both tests will allow the college to see you at your “best”. This could increase your chances of getting into your first-choice college. You should be aware, however, that the SAT and ACT formats differ from each other, and many students earn higher scores on one than on the other.

Once you have planned out when you will be taking each exam it is very important that you begin prepping for the tests. The following are some suggestions on ways to prep yourself:

- Take advantage of review courses available to Sachem students, such as after school programs and the Kaplan review course.
- Use the access code on your PSAT/NMSQT score report to sign in to My College Quickstart. With this personalized planning kit, you can prepare for the SAT using a study plan based on your PSAT/NMSQT results and explore lists of suggested colleges, majors and careers.
- Visit the SAT Preparation Center at www.collegeboard.com to take a free full-length official practice test and get a score and skills report. Be sure to sign up for The Official SAT Question of the Day for daily practice.
- Review for the ACT online at www.actstudent.org/testprep
- Most of all- **PRACTICE, PRACTICE, PRACTICE!!!!!!** The more you prep for this exam, chances are the better you will do!

GOOD LUCK!!!

What is on the ACT?

TEST	TIME	CONTENT
English	45 minutes	Standard written and Rhetorical skills.
Mathematics	60 minutes	Mathematical skills students have typically acquired in courses taken up to the beginning of grade 12.
Reading	35 minutes	Measure reading comprehension
Science	35 minutes	Measure the interpretation, analysis evaluation, reasoning, and problem solving skills required in the natural sciences.
Optional	30 minutes	Measures writing skills emphasized in high school English classes and in entry-level college composition courses.

For more details go to www.actstudent.org/testprep/description/index.html

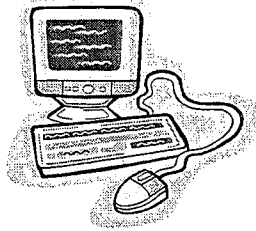
What is on the SAT?

TEST	TIME	CONTENT
Critical Reading Section	70 minutes	Reading Comprehension Sentence completion Paragraph length critical reading
Math Section	70 minutes	Numbers and operations Algebra and functions Geometry Statistics Probability & Data analysis
Writing Section	25 minute essay 25 minute multiple choice	Grammar usage Word choice

For more details go to www.collegeboard.com/student/testing/sat/reading.mtml

Register For The SAT Exams!!

Register Online at
www.collegeboard.com



IMPORTANT DATES

SAT I/II Test Dates

March 12, 2011
May 7, 2011
June 4, 2011

Registration Deadline

February 11, 2011
April 8, 2011
May 6, 2011

For Fall 2011 Test Dates and Registration Deadlines: please check the websites beginning in July 2011

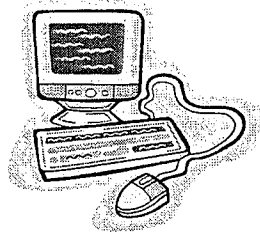
SACHEM HIGH SCHOOL NORTH
CEEB CODE #332-762

IMPORTANT!! Students must use Sachem's CEEB Code when registering for the SAT in order for us to receive your scores.

****Please check with the individual colleges you are applying to if they require SAT Subject Tests. Up to three of these one hour tests may be taken in one day.**

Register For The ACT Exams!!

Register Online at
www.actstudent.org



IMPORTANT DATES

ACT Test Date

April 9, 2011

June 11, 2011

Registration Deadline

March 4, 2011

May 6, 2011

For Fall 2011 Test Dates and Registration Deadlines: please check the websites beginning in July 2011

SACHEM HIGH SCHOOL NORTH
CEEB CODE #332-762

IMPORTANT!! Students must use Sachem's CEEB Code when registering for the ACT in order for us to receive your scores.

There is also an optional writing portion on the ACT exam. Please check with your individual colleges if they require the writing section. This section may also be used in place of the SAT Subject tests. Please check with your individual colleges if this applies.

Which College Is Right For Me?

Choosing a college is a big decision. The key is to remember that there's no such thing as a "perfect" school—you'll find many colleges and universities that match your preferences. Explore your interests and take the time to find the college that's right for you.

Some things to consider: Questions to ask yourself.

1. What career am I interested in?
2. What major will I study in college?
3. Do I want to go away to school and if yes how far do I want to go?(miles, hours etc..)
4. Do I want to attend a small college or a large university?
5. What surroundings do I prefer: rural, urban or somewhere in between?
6. If I play a sport or instrument, do I want to continue that in college?
7. What extracurricular activities am I looking for in a college/university?
8. Is there housing available?
9. Do I want an enclosed campus setting or an open city setting for a college?

It is important to select a "range" of college choices. You aspirations can be high but it is important to keep your choices well rounded. These choices can be broken into three categories:

REACH	TARGET	SAFETY
Dream Choices	Possible Fits	Sure Shot
Only meeting a few requirements	Met most of requirements	Meets all requirements

COLLEGE COMPARISON WORKSHEET

Comparative Criteria	College #1	College #2	College #3	College #4
Application Deadline				
Required Tests				
Test Scores				
H.S. Average				
Interview Req.				
Tuition Per year				
Room/Board				
Size				
Public/Private				
2yr/ 4yr				
Distance				
Location (State)				
Housing				
Community: Rural, urban or Suburban				
Special programs & Extracurricular Activities				

What to do if. . .

You Have A Learning Disability

If you have a learning disability, there's good news on the college scene. Increasingly, colleges and universities are providing services to help the learning disabled student compete and succeed in the classroom, and that assistance is available from the moment you apply.

According to admissions officials, there are two crucial moves the student with learning disabilities should make when beginning the admission process.

First, evaluate colleges on the services they provide to learning disabled students. Of course you should consider such things as location, majors, athletics, extracurriculars, the social scene, etc., but you should also give special attention to how well the college can help you with your particular disability.

For example, according to Larry West, a former university admissions director, most colleges offer learning centers that provide help to all students. You should look specifically for colleges that provide the special kind of help you need. For example, ask about . . .

- **Tutors:** Who's available – students? graduate assistants? professors? others with experience helping learning disabled students?
- **Untimed tests:** Students with documented disabilities are usually allowed to take untimed tests in the learning center.
- **Computer facilities:** The availability of computers/word processors with spell-checkers makes writing much easier for students with dyslexia.

Ultimately, suggests West, if you can't find a four-year college that offers what you need, enroll in a two-year college that can help you and transfer later to a four-year college or university.

Second, don't try to hide your disability from the colleges you're applying to. Be willing and ready to discuss your disability—how it's affected your high school record and how you've worked to overcome it.

Admissions professionals are unanimous and emphatic about this: you should be ready to provide documentation of your disability. West adds that even if you have done well in high school, knowing about your disability can help college officials evaluate your record more fairly and, if you are accepted, counsel you on course selection and support services. Both West and other admissions professionals agree that your disability will not work against you in the admission process. "You should be up front, West says. "We're admissions offices, not denial offices. We're looking for the possibilities."

Want to learn more? There's lots of information available, but probably nothing better than *Unlocking Potential: College and Other Choices for Learning Disabled People – A Step-By-Step Guide*, (Adler & Adler, Bethesda, Maryland). It may be hard to find in bookstores but check your local library. It's clear, direct, and full of references for additional information.

Sarah Van Arsdale is a California-based freelance writer.

<http://www.collegexpress.com/admissionsoffice/editorialview.asp?id=185>

CAMPUS TOURS AND INTERVIEWS

Finding the "right" college is never a simple task. Two great ways to help narrow your search and get a better perspective of the school is through a Campus Tour/Visit or Campus Interview.

THE CAMPUS VISIT:

Purpose: To get the true college campus "experience". You will not know if you feel comfortable with the college unless you see it in person.

Best Time to Visit: When college is in session, either fall or spring.

How to schedule a Visit? Check with the college's web site, call to inquire about OPEN HOUSE dates or call the admissions office directly and schedule a visit. Just make sure you view the school when there are students on campus to get the best impression.

Get the Most Out of Your Visit: Ask if you can attend at least one class in your favorite subject area, meet with an admissions representative, professor or coach. Eat a meal in the dining hall, check out the school newspaper, and walk into the library. Stay overnight if possible and check out the local town surroundings. (See enclosed checklist included in this packet)

THE CAMPUS INTERVIEW

Although few colleges require an interview and students do get into the colleges of their choice without an interview, it is always a good idea to try to arrange one.

Tips for a successful interview experience:

- Be Prepared- Study the college's brochures, catalogs and web site.
- Make a list of questions you would like to ask (See: Suggested Question Sheet included in this packet)
- Schedule interview after touring the campus.
- Know your Resume and Student Transcript and be prepared to answer questions about both.
- Know why you want to attend their college and what you feel you have to offer the student body or campus.
- Make sure to send a thank you note to the interviewer for the opportunity.

HOW TO VISIT A COLLEGE CAMPUS – CHECKLIST

Probably the best way to see if you'll "fit in" at a college is to visit it in person. Make a copy of this checklist and bring it with you, so you won't forget to see everything you should. Some general tips: (1) go with your parents, (2) visit the campus when classes are in session, so you can sit in on a couple and speak with students and faculty, and (3) allow 3-5 hours per campus.

College: _____

Date of Visit: _____

Accommodations: _____

Tour Time/Place: _____

Contact/Phone: _____

Directions attached? Yes/No

Parking Permit Needed? Yes/No

Places to visit and/or look for information

- Student center/hangouts
- Library
- Classrooms
- Bulletin boards on campus
- Admissions Office
- Dining
- Dorms
- Career Placement Office
- Bookstore
- The local community
- School/community papers
- Events calendar
- Campus map
- Off-campus stores
- Places of worship
- Health Center

My overall reaction to this college

- Better than before I visited
- About the same as before I visited
- Not as good as before I visited

Additional Notes:

Academic Items to evaluate

- Classes-quality
- Classes-size
- Pressure
- Competition
- Workload
- Freshman Orientation Program(s)
- Academic advisors for Students

Housing items to evaluate

- Dorms:
 - quality
 - neighborhood
 - security
 - noise level
- Off Campus:
 - quality
 - neighborhood
 - security
 - noise level
- Laundry
- Kitchen
- Lavatory
- Smoking

Eating items to evaluate

- Dining Hall:
 - quality of food
 - cleanliness
 - nutrition
 - variety
- Local restaurants
- Liquor on campus
- Special Diet availability

Facilities to evaluate

- Health Center
- Special services
- Student center
- Classroom size, lighting and conditions
- Fraternity/sorority houses
- Counseling services
- Placement office
- Disability access/facilities

Sports items to evaluate

- Gym
- Pool
- Track(s) - Indoor and/or outdoor
- Stadium
- Skating/Hockey Rink
- Open spaces for jogging, frisbee, etc.
- Tennis courts
- Intramural sports
- Intercollegiate sports

Community/Area to evaluate

- Overall impression
- Cleanliness
- Presence of crime
- Local entertainment
- Shopping
- Activities/entertainment
- Relationship with college
- Transportation to/from campus
- Unusual weather conditions
- Other colleges nearby

Library items to evaluate

- Size
- Hours
- Study rooms/areas
- Comfort/lighting

Computer facilities evaluation

- Number of PC's
- Hours accessible
- Software available
- Downtime
- Knowledgeable assistance
- Number of printers
- Network availability
- Fees for computer use

Impression of students

- Academic attitudes
- Backgrounds/ethnic mix
- Interactions

Impressions of faculty

- Accessibility
- Teaching Styles
- Dedication
- Openness

THE FOLLOWING ARE SUGGESTED QUESTIONS TO CONSIDER WHEN SPEAKING WITH COLLEGE REPRESENTATIVES:

What different types of programs do you offer?

Admissions requirements?

- a. Grades
- b. Board Scores
- c. Recommendations
- d. Achievement Examinations

Costs?

- a. Tuition/Fees
- b. Room and Board
- c. Private Housing

Types of Financial Aid?

- a. Scholarships and grants available through the school or individual programs.
Are they based on need, scholastic ability, or special talent?
- b. Loans
- c. Work Study
- d. How do you apply for aid?
- e. Is the tuition, fee, room and board cost guaranteed for 2-4 years?

How long does it take to complete the program of my choice?

What is the geographic location of the school and what is the size?

What is the average class size?

Are career and personal counseling services available?

Are religious services available for all denominational groups?

What campus based recreational programs are there?

Is local recreation and low cost dining available?

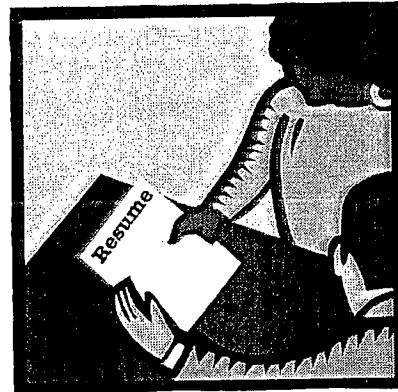
What interscholastic and intramural teams do you have?

Are orchestral and choral programs available?

Can freshmen have cars on campus?

Tips for Building a Winning College Resume

- **Start by writing down all activities and work experiences you have been involved in during your high school career.**
Generally, your resume should include only those things you have done in grades 9-12.



- **Once you compile your list of activities, organize the list into key categories.**
Some common categories are: *Work Experience, Awards and Honors, Extracurricular Activities, Community Service, etc.*
- **Prioritize your activities within each category.**
List those involvements that have been the most important/meaningful to you towards the top of the resume and work your way down, list those activities that you have participated in more recently before those that you completed early in your high school career.
- **Elaborate on meaningful activities by listing key accomplishments in bullet format underneath that activity.**
- **Avoid repeating your transcript on your resume.**
The colleges will receive a record of your grades, GPA, class rank, and test scores. It is not necessary to repeat this information on your resume. Do not list courses in progress or prior honors/AP courses on your resume, unless the college specifically asks for this.
- **Don't sell yourself short and don't over-elaborate.**
Don't assume that certain involvements are unimportant or not worth including. These things may actually set you apart from the competition. Do not misrepresent your involvements by including activities that you did not participate in or did not fulfill your obligations toward.
- **Try to keep it to one or two pages at the most.**
- **Use the sample resume on the next page to help start the process...**

Joe Sachem
212 Smith Road
Lake Ronkonkoma, NY 11779
(631) 555-5555 / emailaddress@sachem.du

Objective:

Acceptance into a competitive college to pursue a bachelor's degree in psychology.

Education:

Sachem High School
212 Smith Road, Lake Ronkonkoma, NY 11779

Interests & Activities:

Grade:

Drama Club

9-12

- Cast member in the following productions:
 - "Annie"
 - "One Upon a Mattress"
 - "Jesus Christ Superstar"

12

11

10

Student Government

10-12

- Junior Class Treasurer
- Organized fundraisers for the class
- Helped design float for Homecoming Parade

11

10-12

10-12

National Honor Society

11-12

- Tutored students in math and science

Spring Track

9

- Competed in pole vault and shot put.

Community Service:

Thanksgiving Food Drive

9-12

- Collected and distributed food to families in need in the community.

Volunteer at Stony Brook Hospital

11-12

Breast Cancer Walk-a-Thon

11

Work Experience:

Waldbaums, Lake Ronkonkoma, NY (June 2009-present)

- Cashier

Babysitter (March 2008-August 2008)

- Watched three children, ages 4, 6, and 8, for a neighbor twice a week.

Honors & Awards:

Principal's Honor Roll, every semester

9-12

Student of the Week, January 2012

12

Perfect Attendance Award

10-11

Getting Ready for Senior Year



Calling all juniors!

- **Start Gathering Those Applications!**
 - View the online or request a paper copy of the applications of your desired colleges.

- **Keep a detailed list of what is required of you:**
 - ACT & SAT Scores
 - Do they require SATII Subject Tests and how many?

- **School Resume**
 - Finalize and Proof Read Student Activities Resume

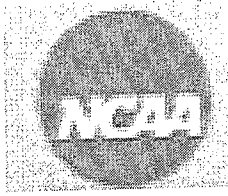
- **Letters of Recommendation**
 - Request letters from teachers that you currently have
 - Should reflect their relationship with you as a student
 - Letters will be given directly to the Guidance Office from each teacher and uploaded into Naviance.
 - Most colleges/universities require 2 or 3 total

- **College Essay**
 - What are most colleges looking for in your essay?
 - Your preferences, values & thought processes
 - Writing skills, grammar usage, spelling

- **College Interview**
 - An exchange of information-you learn about the college and the college learns about you
 - Not required in all schools, but recommended.

- **Finalizing Your List**
 - Do apply to a large range of Colleges
 - Don't go overboard. Quality is better than Quantity.
 - Meet with your counselor in the fall to request transcripts and to review your application material.

NCAA Clearinghouse: What Do I Need to Do?



The NCAA Clearinghouse is an organization responsible for ensuring that prospective student athletes have met the requirements set forth by the NCAA.

1. Register with the eligibility center.
2. Talk to your coach about what colleges and division of play (Division I, II, III) may be suitable for you.
3. Make sure you are still on course to meet core-course requirements (verify you have the correct number of core courses and that the core courses are approved by your high school with the eligibility center).
4. After your junior year, have your high school guidance counselor send a copy of your transcript. If you have attended any other high schools, make sure a transcript is sent to the eligibility center from each high school.
5. Complete NCAA student release forms one and two and submit
6. When taking the ACT or SAT, request official test scores to be sent to the eligibility center (the code is "9999").
7. Have your high school guidance counselor send a final transcript with proof of graduation to the eligibility center.

Please visit www.eligibilitycenter.org for additional information!





NCAA FRESHMAN-ELIGIBILITY STANDARDS QUICK REFERENCE SHEET

KNOW THE RULES:

Core Courses

- Starting August 1, 2008, 16 core courses will be required for NCAA Division I only. This rule applies to any student first entering any Division I college or university on or after August 1, 2008. See the chart below for the breakdown of this 16 core-course requirement.
- 14 core courses are required in NCAA Division II. See the breakdown of core-course requirements below.

Test Scores

- Division I has a sliding scale for test score and grade-point average. The sliding scale for those requirements is shown on page two of this sheet.
- Division II has a minimum SAT score requirement of 820 or an ACT sum score of 68.
- The SAT score used for NCAA purposes includes only the critical reading and math sections. The writing section of the SAT is not used.
- The ACT score used for NCAA purposes is a sum of the four sections on the ACT: English, math, reading and science.
- All SAT and ACT scores must be reported directly to the NCAA Initial-Eligibility Clearinghouse by the testing agency. Test scores that appear on transcripts will no longer be used. When registering for the SAT or ACT, use the clearinghouse code of 9999 to make sure the score is reported to the clearinghouse.

Grade-Point Average

- Only core courses are used in the calculation of the grade-point average.
- Be sure to look at your high school's list of NCAA-approved core courses on the clearinghouse Web site to make certain that the courses being taken have been approved as core courses. The Web site is www.ncaaclearinghouse.net.
- Division I grade-point-average requirements are listed on page two of this sheet.
- The Division II grade-point-average requirement is a minimum 2.000.

DIVISION I	
16 Core-Course Rule	
16 Core Courses:	
4	years of English.
3	years of mathematics (Algebra I or higher).
2	years of natural/physical science (1 year of lab if offered by high school).
1	year of additional English, mathematics or natural/physical science.
2	years of social science.
4	years of additional courses (from any area above, foreign language or non-doctrinal religion/philosophy).

DIVISION II	
14 Core-Course Rule	
14 Core Courses:	
3	years of English.
2	years of mathematics (Algebra I or higher).
2	years of natural/physical science (1 year of lab if offered by high school).
2	years of additional English, mathematics or natural/physical science.
2	years of social science.
3	years of additional courses (from any area above, foreign language or non-doctrinal religion/philosophy).

PLEASE NOTE: For students first entering any NCAA college or university on or after August 1, 2005, computer science courses may only be used for initial-eligibility purposes if the course receives graduation credit in mathematics or natural/physical science and is listed as such on the high school's list of NCAA-approved core courses.

OTHER IMPORTANT INFORMATION

- Division II has no sliding scale. The minimum core grade-point average is 2.000. The minimum SAT score is 820 (verbal and math sections only) and the minimum ACT sum score is 68.
- 14 Core courses are required for Division II.
- 16 Core courses are required for Division I.
- The SAT combined score is based on the verbal and math sections only. The writing section will not be used.
- SAT and ACT scores must be reported directly to the clearinghouse from the testing agency. Scores on transcripts will not be used.

For more information regarding the rules, please go to www.ncaa.org. Click on "Academics and Athletes" then "Eligibility and Recruiting." Or visit the clearinghouse Web site at www.ncaaclearinghouse.net.

Please call the NCAA Eligibility Center if you have questions:

Toll-free number: 877/622-2321

NCAA Eligibility Center
08/28/07 LM:cvs

NCAA DIVISION I SLIDING SCALE CORE GRADE-POINT AVERAGE/ TEST-SCORE New Core GPA / Test Score Index		
Core GPA	SAT Verbal and Math ONLY	ACT
3.550 & above	400	37
3.525	410	38
3.500	420	39
3.475	430	40
3.450	440	41
3.425	450	41
3.400	460	42
3.375	470	42
3.350	480	43
3.325	490	44
3.300	500	44
3.275	510	45
3.250	520	46
3.225	530	46
3.200	540	47
3.175	550	47
3.150	560	48
3.125	570	49
3.100	580	49
3.075	590	50
3.050	600	50
3.025	610	51
3.000	620	52
2.975	630	52
2.950	640	53
2.925	650	53
2.900	660	54
2.875	670	55
2.850	680	56
2.825	690	56
2.800	700	57
2.775	710	58
2.750	720	59
2.725	730	59
2.700	730	60
2.675	740-750	61
2.650	760	62
2.625	770	63
2.600	780	64
2.575	790	65
2.550	800	66
2.525	810	67
2.500	820	68
2.475	830	69
2.450	840-850	70
2.425	860	70
2.400	860	71
2.375	870	72
2.350	880	73
2.325	890	74
2.300	900	75
2.275	910	76
2.250	920	77
2.225	930	78
2.200	940	79
2.175	950	80
2.150	960	80
2.125	960	81
2.100	970	82
2.075	980	83
2.050	990	84
2.025	1000	85
2.000	1010	86

NCAA Initial-Eligibility Accommodations for Students with Disabilities

1. Students with disabilities may receive accommodations in order to meet NCAA initial-eligibility standards. To receive accommodations, the student's disability must be documented. There is no need to document a student's disability with the NCAA if a student:
 - a. Takes a nonstandard ACT or SAT; and/or
 - b. Takes courses for students with disabilities that are designated on the high school's list of NCAA-approved core courses.

2. In NCAA Division I only, if a student uses approved core courses taken after the eighth semester of high school (including courses taken in the summer after high school graduation) and before initial full-time collegiate enrollment, the following documents must be submitted to the NCAA national office:
 - a. Signed copy of the most recent professional evaluation report diagnosing the student's disability, including diagnostic test results; and
 - b. Copy of the student's most recent Individualized Education Plan (IEP), Section 504 Plan or other statement from the high school describing the accommodations received by the student because of the disability.

If you have any questions about any of the information, procedures or accommodations, please contact the NCAA Eligibility Center, P.O. Box 7136, Indianapolis, Indiana 46207 or by telephone at 317/223-0700.



WEBSITE ADDRESSES

COLLEGE ENTRANCE EXAMS AND TEST PREP

- www.actstudent.org (ACT Registration)
- www.collegeboard.com (SAT Registration & Mycollegequickstart)
- www.princetonreview.com
- www.sylvanprep.com

COLLEGE SEARCHES AND PLANNING TOOLS

- <http://connection.naviance.com/sachemnorth>
- www.princetonreview.com
- www.nextstepmagazine.com
- www.petersons.com
- www.collegeanswer.com
- www.gocollege.com
- www.nycolleges.org
- www.careersandcolleges.com
- www.collegeview.com
- www.collegeboard.com

COLLEGES AND APPLICATIONS

- www.suny.edu
- www.cuny.edu
- www.commonapp.org
- www.universalcollegeapp.com

SCHOLARSHIPS AND FINANCIAL AID

- www.fastweb.com
- www.scholarships101.com
- www.fafsa.ed.gov
- www.pin.ed.gov

CAREER SEARCHES

- www.nycareerzone.org

ATHLETES

- www.eligibilitycenter.org (NCAA Clearinghouse)

Glossary of Terms

Associate Degree – A degree granted upon completion of a two-year program of study

Bachelor Degree – A degree granted upon completion of a four-year program of study

Common Application – Save time, energy, and repetition! A consortium of about 300 colleges will accept the “Common Application” form, which can greatly simplify the application process

CUNY – Also Known as the City University of New York, CUNY is the nation’s largest urban university. Comprised of 23 institutions across the five boroughs of New York City, CUNY educates over 231,000 students.

Early Action – A student who has a “first choice” college, but does not want to commit to that college, can apply early notification of the college’s admissions decision. Students then have till early May to finalize their decision.

Early Decision – A student who has a clear “first choice” college can receive early notification of the college’s admissions decision, as long as he/she agrees in advance to enroll if accepted. Application deadlines for Early Decision are usually in November, with decision letters mailed by mid-December.

FAFSA/SCC Profile/TAP – The FAFSA (Free Application for Federal Student Aid) is a form that will determine your “expected family contribution”. Some colleges will also require the CSS Profile be completed. TAP (Tuition Assistance Program) awards money to students based on their New York State taxable income. The award can only be applied to schools within New York State.

G.P.A – Refers to your “Grade Point Average”. On the college level, this is usually on a 4.0 scale, where 4.0 would be equivalent to an “A”

Letter of Recommendation – Cannot be written by mom or dad(!), but should come from someone who knows you well. IT IS NOT TOO SOON to think about whom you will ask for letters!

NCAA Clearinghouse Form – The “National College Athletic Association” requires potential Division I and Division II athletes to complete this form. See your counselor for further information.

Open Admissions – Colleges that subscribe to this policy will accept any applicant with a high school diploma.

Rolling Admissions – Colleges that subscribe to this policy will review applications shortly after receiving them with no firm deadline date. Applying early is still paramount due to these colleges filling their allotment of students.

Services for Student with Disabilities – A College Board service that assists disabled students by providing services and reasonable accommodations appropriate to the student’s disability and the purpose of the exam the student is taking. SSD provides Advanced Placement Program exam, PSAT/NMSQT, and SAT testing accommodations for student who have documented disabilities.

SUNY – Also known as the State University of New York. The public university system embraces sixty-four distinctly individual colleges located across New York State.

Universal Application – Similar to the Common Application, The Universal Application is an online admissions application consortium for college-bound students.



ADMISSIONS INFORMATION SUMMARY – 2010

For more information call our toll-free number at 800-342-3811 or visit us on the web at www.suny.edu/student

Campus Name (by campus type)	Undergraduate Enrollment	SAT Scores*** (combined) Scores reflect middle 50%	ACT Scores (composite) Scores reflect middle 50%	H.S. GPA	Early Decision (ED) or Early Action (EA)	Early Admission	EOP Program	ESL Courses	Joint Admissions	Teaching Certificate	Honors Program	Time Shortened Degree	ROTC
University Centers and Doctoral Degree Granting Institutions													
Albany	13,000	1110-1260	24-28	88-94	EA	Yes	Yes	Yes	Yes	Grad level	Yes	No	A*, AF*
Binghamton	11,704	1180-1356	26-31	91-96	EA	Yes	Yes	Yes	Yes	Grad level	Yes	Yes	A*, AF*, M*
University at Buffalo**	19,368	1120-1270	25-29	89-95	ED	Yes	Yes	Yes	Yes	Grad level	Yes	No	A*
Stony Brook**	16,397	1160-1290	25-29	88-94	No	Yes	Yes	Yes	Yes	Yes	Yes	No	A*
NYS Ceramics at Alfred University	647	1040-1220	24-28	84-92	ED	Yes	Yes	No	No	Yes*	Yes	No	A*
College of Optometry	Graduate and Professional Degrees Only				ED	No	No	No	No	No	No	No	
Cornell University:													
Agriculture & Life Sciences++	3,357	--	--	--	ED	Yes	Yes	Yes	Yes	Yes	Yes	Yes	A, AF, M, N
Human Ecology	1,208	1280-1440	28-32	--	ED	Yes	Yes	Yes	No	Yes	Yes	Yes	A, AF, M, N
Veterinary Medicine++	Graduate Level Only				ED	No	No	No	No	No	No	No	
Industrial & Labor Relations	890	1300-1450	28-32	--	ED	Yes	Yes	No	No	No	Yes	No	A, AF, M, N
Environmental Science & Forestry	1,350	1190-1240	--	88-94	EA	Yes	Yes	Yes*	No	Yes*	Yes	No	A*, AF*
Downstate Medical Center (Brooklyn)+	309	--	--	--	No	Yes	Yes	No	No	No	No	No	
Upstate Medical University (Syracuse)	298	--	--	--	No	Yes	Yes	No	Yes	No	No	No	
University Colleges													
Brockport	7,119	1020-1160	22-25	87-92	No	Yes	Yes	No	Yes	Yes	Yes	Yes	A, AF*, N*
Buffalo State	9,730	950-1110	20-24	84-90	ED	Yes	Yes	No	Yes	Yes	Yes	No	A*
Cortland	6,040	1060-1200	24-26	88-94	EA	Yes	Yes	Yes	Yes	Yes	Yes	Yes	
Fredonia	5,085	1040-1200	22-26	87-92	ED	Yes	Yes	Yes	Yes	Yes	Yes	Yes	
Geneseo	4,950	1290-1380	28-30	91-96	ED	Yes	Yes	Yes	Yes	Yes	Yes	No	A, AF*, M*, N*
New Paltz	6,554	1100-1300	24-29	88-94	EA	Yes	Yes	Yes	Yes	Yes	Yes	Yes	
Old Westbury	3,821	990-1110	22-24	83-90	EA	Yes	Yes	Yes	Yes	Yes	Yes	Yes	A*, AF*
Oneonta	5,700	1060-1170	23-26	87-92	EA	Yes	Yes	Yes	No	Yes	Yes	Yes	
Oswego	7,200	1050-1200	22-27	87-93	ED	Yes	Yes	Yes	Yes	Yes	Yes	No	A*, AF*
Plattsburgh	5,906	1000-1140	21-25	85-90	ED	Yes	Yes	Yes	No	Yes	Yes	Yes	A*
Potsdam	3,757	--	--	86-91	No	Yes	Yes	Yes	Yes	Yes	Yes	Yes	A*, AF*
Purchase	3,790	1060-1210	24-29	84-90	EA	Yes	Yes	No	No	No	No	No	
Empire State College	18,408	--	--	--	No	No	No	No	No	Grad level	No	Yes	
Colleges of Technology													
Alfred State	3,650	860-1070	17-24	79-87	No	Yes	Yes	Yes	Yes	No	Yes	No	A*
Baccalaureate only	810	1030-1180	23-27	87-93									
Canton	3,300	823-1008	17-23	77-84	No	Yes	Yes	No	Yes	No	Yes	No	A*, AF*
Baccalaureate only	890	860-1060	18-23	79-85									
Cobleskill++	2,500	830-1050	17-21	77-85	No	Yes	Yes	Yes	Yes	No	Yes	No	
Baccalaureate only	604	900-1100	19-24	80-88									
Delhi	3,179	880-1100	16-21	76-82	No	Yes	Yes	Yes	Yes	No	Yes	No	
Baccalaureate only	327	980-1110	--	79-87									
Farmingdale State+	6,991	950-1100	19-24	80-88	No	Yes	Yes	No	Yes	No	No	No	A*, AF*
Maritime College+	1,575	1070-1150	20-24	82-89	No	Yes	Yes	No	Yes	No	No	No	A, AF*, CG*, M*, N*
Morrisville State	3,380	900-1040	19-22	79-84	No	Yes	Yes	No	Yes	No	No	No	A*
Baccalaureate only	524	960-1100	20-24	84-92									
SUNYIT	2,300	1000-1150	22-25	85-91	EA	Yes	Yes	No	Yes	No	No	Yes	A*, AF*

Abbreviations: A = Army, AF = Air Force, CG = Coast Guard, M = Marines, N = Navy

* Cross-registration (offered at neighboring institutions)

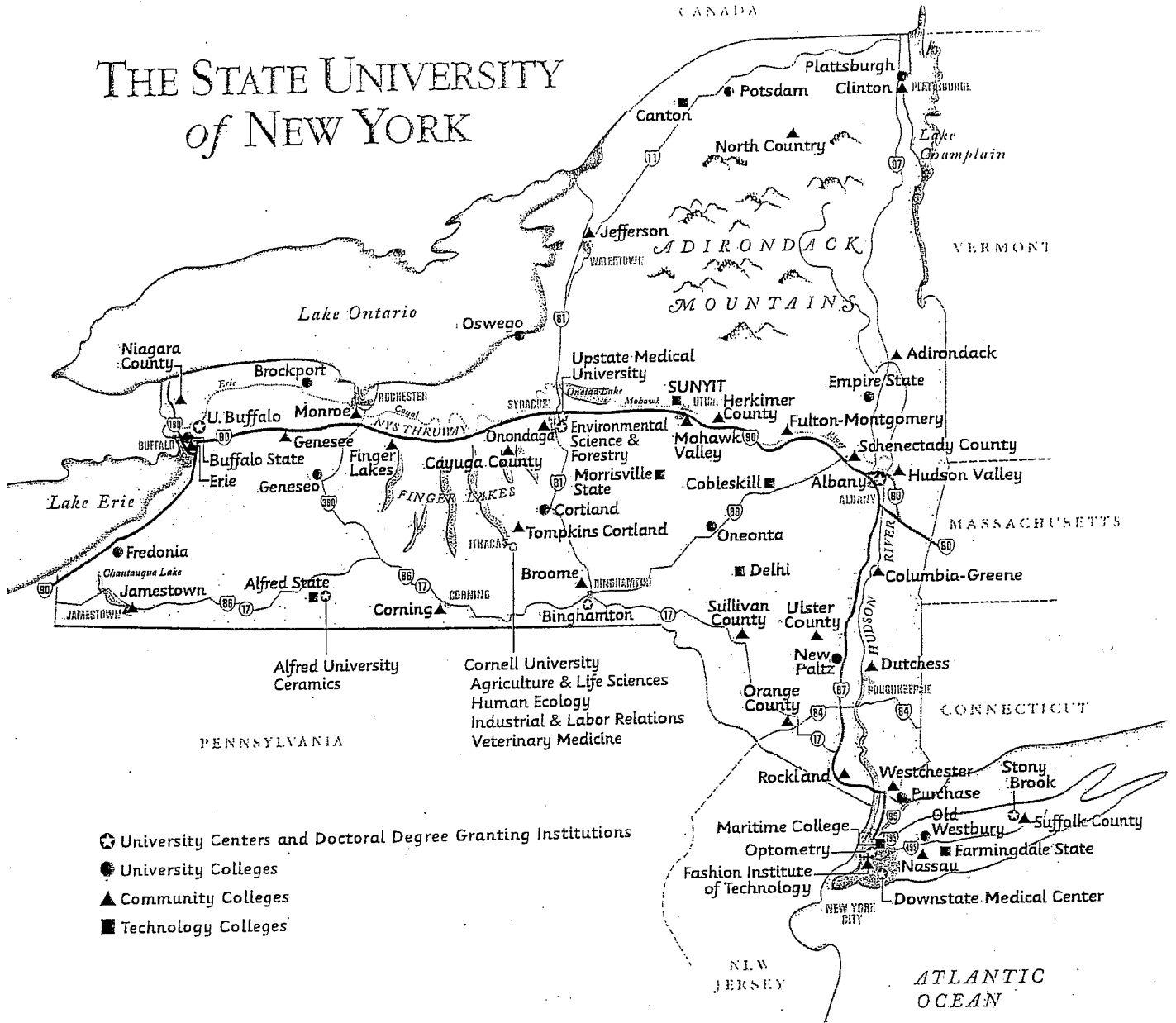
** Enrollment includes Health Science Centers

*** The SAT ranges above represent combined critical reading and math scores (the maximum possible total is 1600). While most campuses base admissions decisions on math and critical reading sections of the SAT, prospective students should consult with campuses of interest to determine policies regarding the SAT writing score and for students taking the ACT, if the ACT writing component is required.

+ 2009 Data

++ 2008 Data

THE STATE UNIVERSITY of NEW YORK



SUNYRESOURCES

Recruitment Response Center 1.800.342.3811 / 518.443.5020

Office of Disability Services 518.443.5139

Center for Student Recruitment (NYC) 212.818.1204